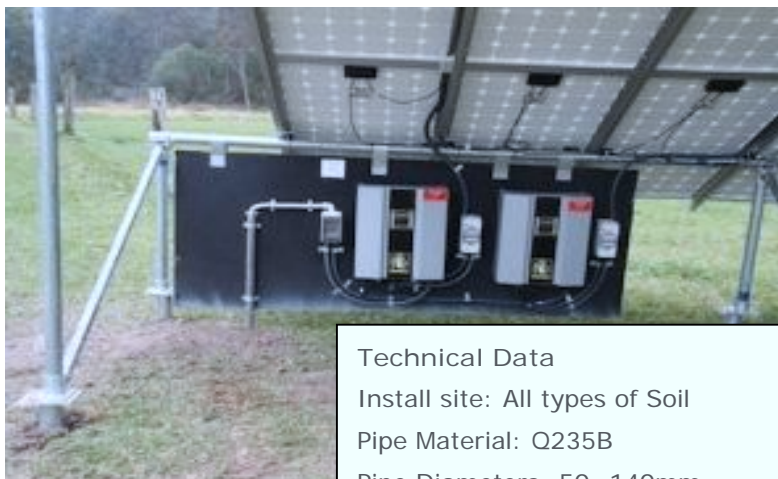


Ground Solar Mounting System

✓ Ground screw mounting system

We have developed different series of screws to meet varied applications. The Ground Screws are installed with a number of specific aids and machines, perfectly perpendicular at the exact point after minutes. This screw-in foundation system is not only suitable for natural ground, but also for dense and even tarred surfaces. Applications are countless, from securing garden umbrellas, windy dryers and fences to carports, flag poles and traffic signs, solar panel systems, advertising boards and even outdoor building for events and expositions for its quick and easy created and removed advantages.



Technical Data

Install site: All types of Soil
 Pipe Material: Q235B
 Pipe Diameters: 50~140mm
 Pipe Length: 1000~2000mm
 Pipe Thickness: 2~4mm
 Standard: GB50021-2001
 GB50007-2002
 GB50011-2001
 Anticorrosive: Hot Dip Galvanized
 Warranty: Ten years warranty

Advantages:

Simple and fast installation: No precast foundation base, no onsite welding or fabrication as required in other solutions like piles, which allows a significant cost reduction. Only a Spiral Piling Machine is needed to dig and drill. Typically, 100-200 screws can be installed per day per machine in a medium stiff soil.

Suitable for all types of soil: Ground screw is the fast and cost effective solution to ground mounting system in all known geologies, from loose soil to bedrock, sand, marsh, and slopes up to 30 degrees.

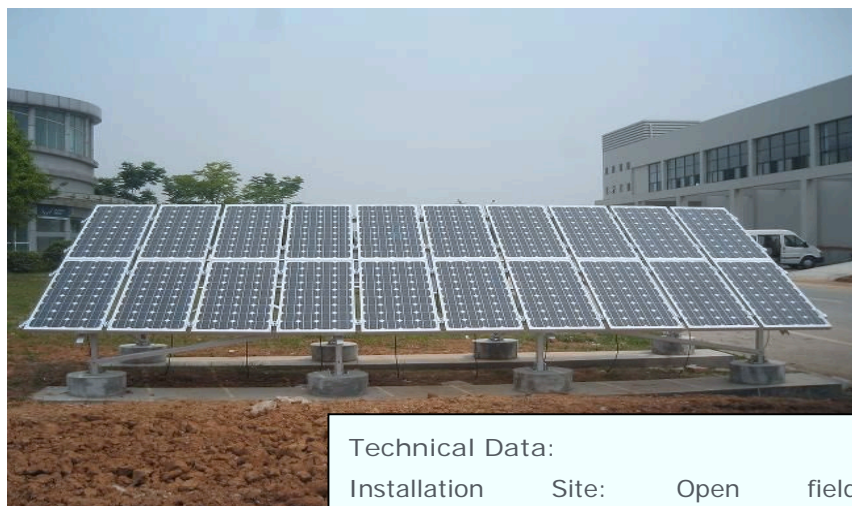
Compatible with all type of mount structures: The head of ground screw can be adapted to whatever the customer's need is.

Environmentally friendly: Without performing and preparation works, the surrounding areas remains unspoiled. Besides, without corruption and zero disposal costs, the screw is totally recyclable, complying with the environmental protection concept.

Easy and quick relocation: High possibility of removing them, reducing the environmental impact and minimizing the removing costs.

✓ Cement Base Mounting System

Sunlink Energy Cement Base Ground Mounting System is applicable to be the photovoltaic array system on the open field. This system is designed to be steady and safety complied with the structural mechanics and construction acts. For the difference foundation solutions, such as concrete with pre-buried bolt, direct buried and ground screw, the system can be modified to be installed. Its material include the hot galvanized steel and anodized aluminum alloy, is all have high anti-corrosive for using outdoor.



Technical Data:

Installation Site:	Open field
Wind Load:	Up to 60m/s
Snow Load:	1.4KN/m
Applicable Module:	Framed or Frameless
Module Orientation:	Portrait
Main Material:	100% Anodized Aluminum
Fastener Material:	Stainless Steel

Advantages:

Easy to Install: The simple structure and some pre-assembly (such as the pre-assembly between feet and support, the pre-assembly between the back angle steel and the back support, etc.) greatly reduces the installation time and cost.

Firm cement foundation: With good strength, high accuracy and strong adaptability to various types of soils, cement pile is the most commonly used pile. The support is fixed on the cement foundation by feet and foundation bolt.

Low Raw Material Cost: The structure of the mount is optimized to use as little carbon steel as possible, which makes our price very competitive.

Adaptable to Various Types of Modules: The height of the clamp and the length of the rail can be adjusted to match customer's modules.

Proven Reliability: The system is designed to stand up to the extreme weather and other international structure load standard by the skilled engineer. The main support components also have been test to guaranty its structure and load-carrying capacity. Its service life can reach 25 years.

✓ Pole Ground Mounting System

Sunlink Energy Pole Mount System is applied to install the solar panels on a single pole. According to different conditions, there are several kinds of solutions for your choice. Sunlink Energy pole mount system is attached importance to the safety and duration. The systems have been calculated complied with the structural mechanics and tested strictly. Its material surface of the parts, such as steel and aluminum, are all finished to get a great anti-corrosion for at least twenty years of outdoor use.



Technical Data

Install site: Open ground

Tilt Angle: 10~60deg

System Height: <5m

Max Wind Speed: <60m/s

Snow Load: <1.4KN/m²

Standard: AS/NZS 1170 and other international Standard

Material: High Class Aluminum alloy Al6005-T5 & Stainless steel 304 & Hot galvanized steel

Color: Natural or optional

Anticorrosive: Anodized aluminum & Hot galvanized

Warranty: Ten years warranty and twenty years service life

Advantages:

Easy to install: The tilt-in module can be put into the extruded rail from the any location and can be high pre-assembly with the clamp to minimize the time and cost of installation. The high integrated support structure just need a few bolts to fasten together.

Offer unmatched durability: with all structural components comprised of high class stainless steel, anodized aluminum alloy and the double anticorrosive finish for the steel pipe and cap, it is designed for twenty years service life and backed by ten years warranty.

Stand up to extreme weather: The grace solar ground mount system is designed to stand up to the extreme weather complied with the AS/NZS 1170 and other international structure load standard by the skilled engineer. The main support components also have been test to guaranty its structure and load-carrying capacity.

Provide broad installation flexibility: These systems accommodate most commercially available framed solar panels and diverse foundation solution, and they can scale easily from small to large, multi-megawatt installations.

✓ Punching Pile-Ground Mounting System

Sunlink Energy Punching Pile Ground Mounting System is application for the large commercial and utility scale PV system on a non-sandy ground. It is suitable for the framed or frameless module installation. In our Punching Pile Ground Mounting System, C Post can be piled into the ground 1~2meters by Pile Machine quickly, then you can mount the pre-assembly Al-Beam structure, the B-Rail and the clamp easily. Our mission is to simplify your installation and ensure the structure safety. Sunlink Energy, your best choice.

Technical Data

Installation Site: Open field

Wind Load: Up to 60m/s

Snow Load: 1.4KN/m

Applicable Module: Framed or Frameless

Module Orientation: Portrait

Rail Material: Anodized aluminum

Post Material: Hot-dip galvanized steel

Adjustability: Post height deviation:
10mm

Post angle deviation: 2

Post verticality deviation: 2

Pile driving depth: 1000-2000mm

Advantages:

Easy Installation: Parts have been high pre-assembly on factory to save your installation time

Safety and Reliability: Check and test the structure strictly to against the extreme weather condition

Flexibility and Adjustable: Smart design reduce the difficulty of the installation on the most condition

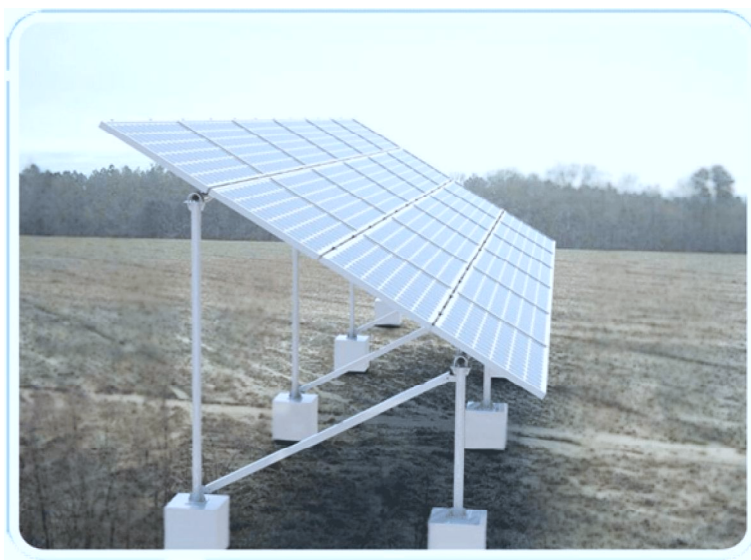
10-Year Warranty: Sunlink Energy provides a 10-years warranty for the material and structure



✓ UB-Ground Mounting System

Sunlink Energy UB-Ground Mounting System is applicable to be the photovoltaic array system on the open field. This system is designed to be steady and safety complied with the structural mechanics and construction acts.

For the difference foundation solutions, such as concrete with pre-buried bolt, direct buried and ground screw, the system can be modified to be installed. Its material, include the hot galvanized steel and anodized aluminum alloy, is all have high anti-corrosive for using outdoor.



Technical data

Install site: Open ground

Tilt Angle: 10~60deg

System Height: <2.5m

Max Wind Speed: <60m/s

Snow Load: <1.4KN/m²

Standard: AS/NZS 1170 and other international Standard

Material: Aluminum alloy Al6005-T5&

Stainless steel 304 & Hot galvanized steel

Anticorrosive: Anodized & Hot galvanized

Color: Natural or Optional

Warranty: Ten years warranty and up twenty years service life

Easy Installation: Parts have been high pre-assembly on factory to save your installation time

Safety and Reliability: Check and test the structure strictly to against the extreme weather condition

Flexibility and Adjustable: Smart design reduce the difficulty of the installation on the most condition

10-Year Warranty: Sunlink Energy provides a 10-years warranty for the material and structure

BENEFITS